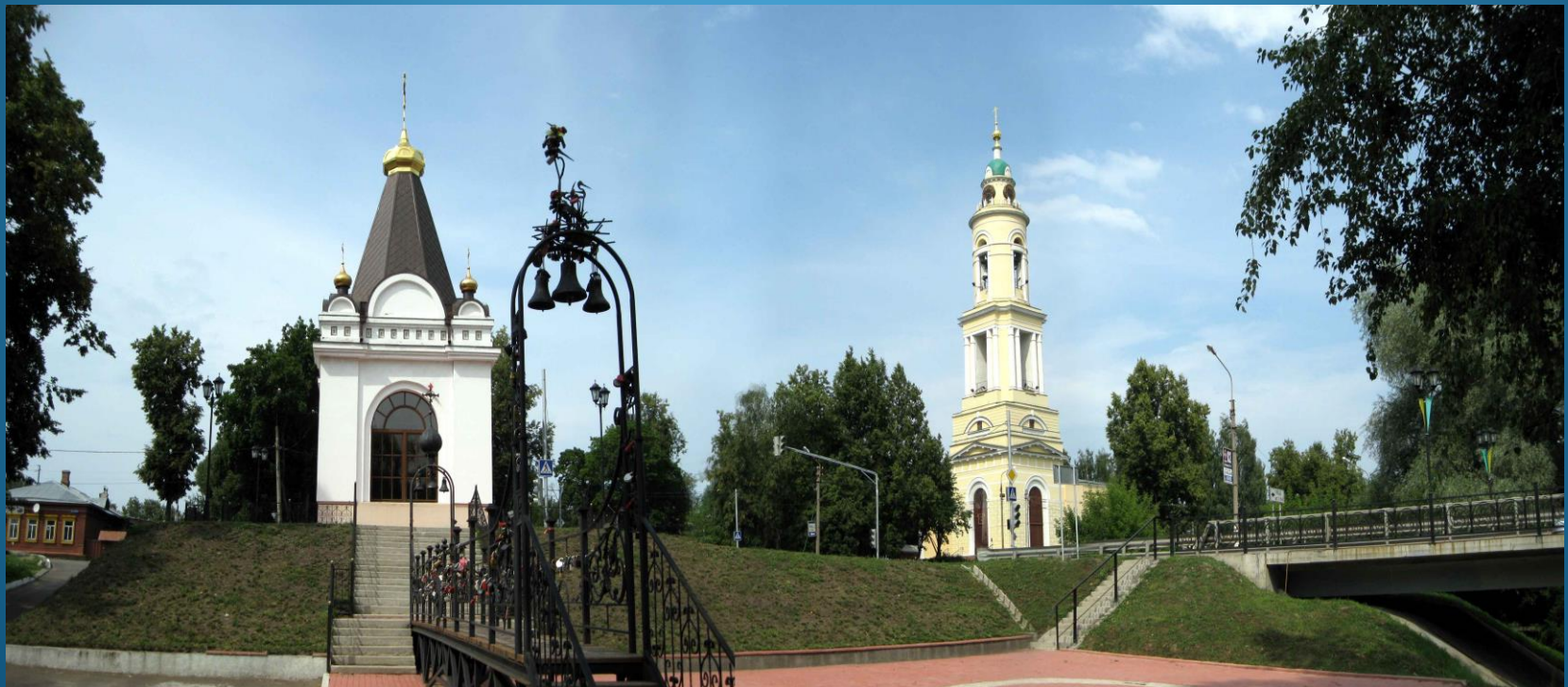




The investment passport of the Pavlovo-Posadskiy municipal district of the Moscow region



2014



Dear friends!



I sincerely welcome all, who shows interest to our district and intends to realize investment ideas and offers here!

The Pavlovo-Posadskiy municipal district - one of the centers of the textile industry in Russia where produces high-quality curtain - tapestry, costume materials, and also fabrics for church use, sieve and technical fabrics for various industries. The unique Pavlovo-Posadskiy shawls created by our artists, are known around the world for their rare beauty.

The Pavlovo-Posadskiy municipal district - the land with its most beautiful nature, the richest historical heritage, unique monuments and the museums. It becomes as the hospitable house, both for tourists and for investors.

At the moment our district dynamically develops and increases rates of social and economic growth. Successful enterprises of food, chemical, metallurgical and other branches operate here, we are developing industrial zone "Mishutino."

I consider that the main instrument for development of economy of the district - attracting of the new investors. We actively seek to develop the partnership with both Russian and foreign investors. We want your business to be effective, stable and secure.

I hope the information presented in the investment passport will allow you to appreciate the capacity of our district and prospects for mutually beneficial cooperation.

**The Head of
Pavlovo-Posadskiy municipal district of
Moscow region**

Oleg Sokovikov

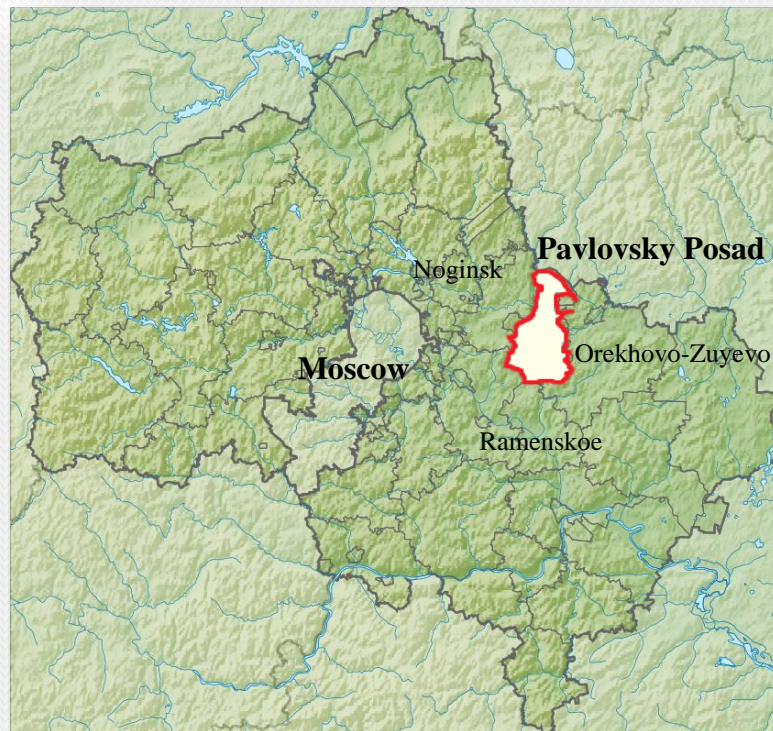


Geographical position

The Pavlovo-Posadskiy municipal area is located in 65 km to the east far from Moscow on the Klyazma River and Vokhonka and Hodts's small rivers.

In the north the district borders with the Vladimir region, in the West, the South and the East it is adjoined Noginsk, Ramensky, and Orekhovo-Zuyevo by municipal regions of the Moscow region.

The district unites 6 municipalities: city settlement Pavlovskiy Posad, city settlement Bolshie Dvory and rural settlements: Averkievskoe, Kuznetsovskoe, Rakhmanovskoe, Ulitinskoe.





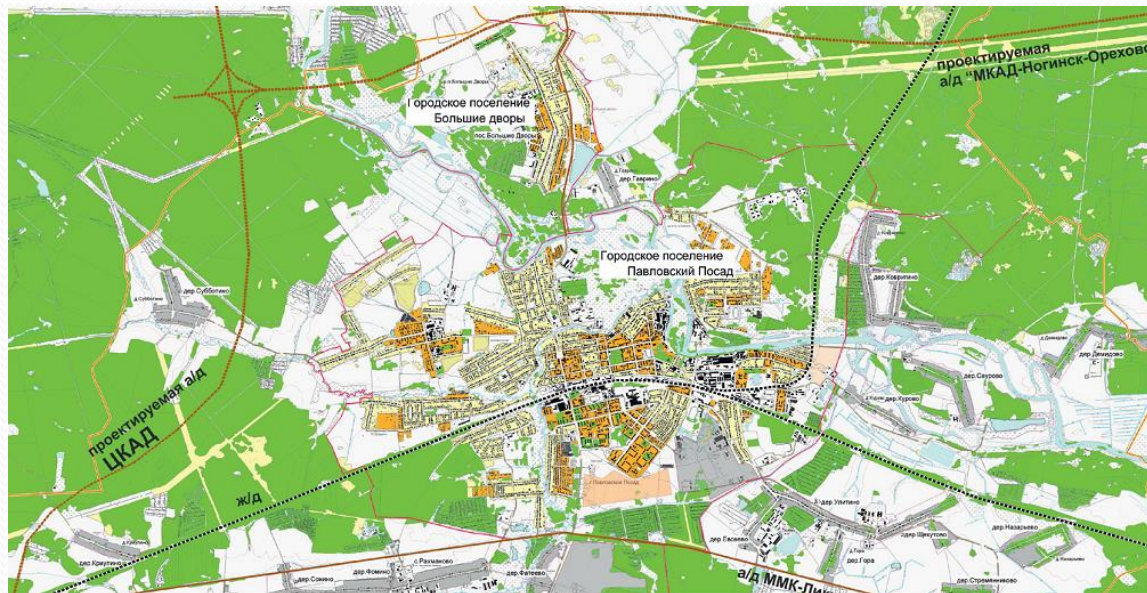
Transport infrastructure

Distance to the international airports:

- To the International Airport Sheremetyevo - 106 km
- To the International Airport Domodedovo - 97 km
- To the International Airport Vnukovo - 118 km

Through the territory of the Pavlovo-Posadskiy municipal district there passes the railway of Gorky direction, a railway Pavlovskiy Posad-Elektrogorsk and a site of federal road M-7 "Moscow - Nizhny Novgorod".

Through the territory of the area will pass a site of the designed Central ring highway of the Moscow region.





Demography. Population



Permanent population - 85 879

urban population: 70 665

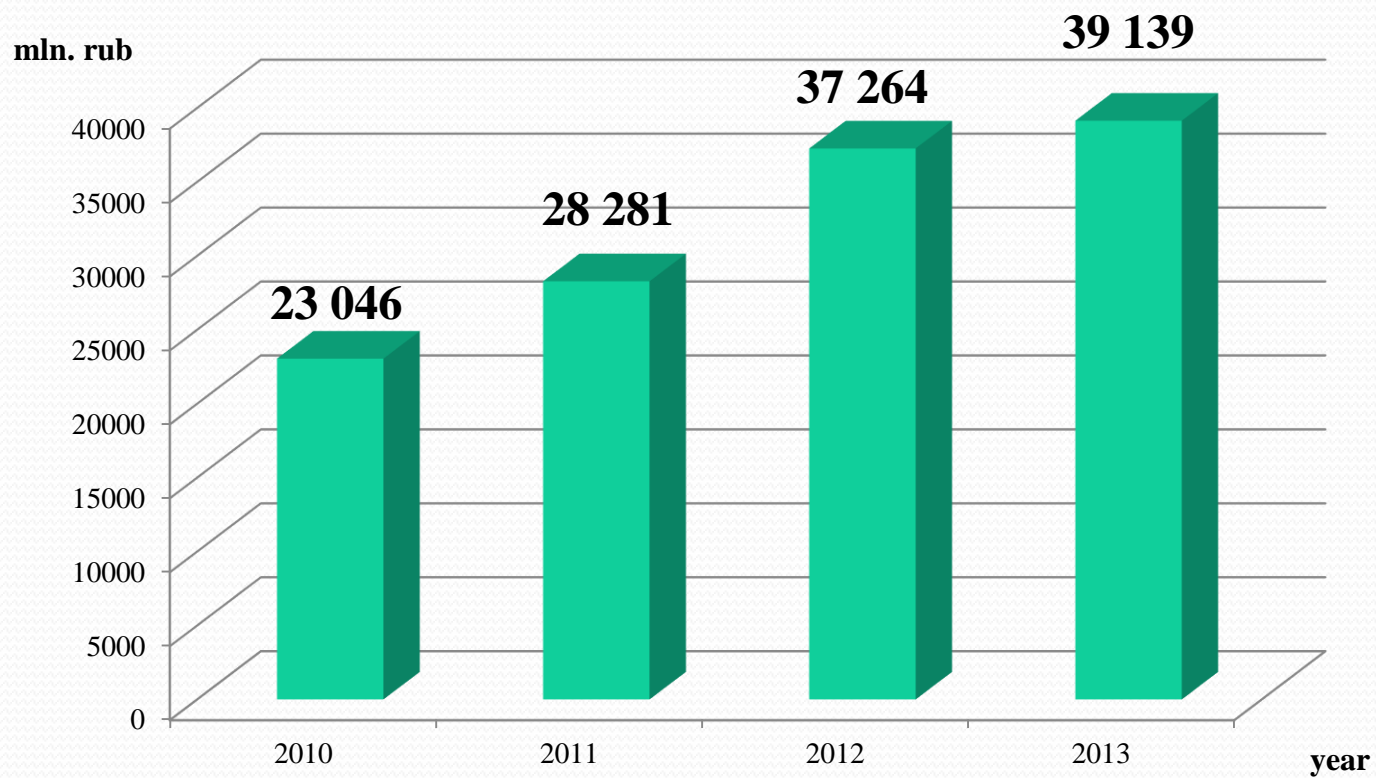
rural population: 15 214

Population density (persons/sq. km) 151,64

Working age population - 43 680



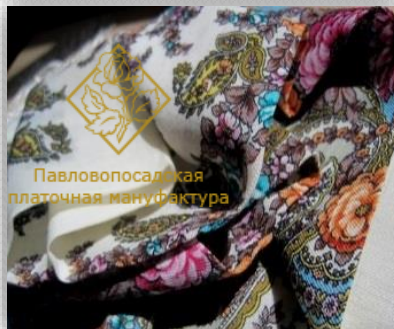
Economic turnover





Main enterprises

- «BASF East», LLC
- «Pavlovskiy Posad Shawl manufactory», OJSC
- «Pavlovskiy Posad KDV», CJSC
- «International aluminum company», LLC
- «Pavlovskiy Posad Worsted Weavers», OJSC
- «Rakhmanovskiy Silk», CJSC
- «Pavlovskiy Posad Silk», LLC
- «Electronics «Ecsiton», OJSC
- «Fire-prevention enterprise «Bereg», CJSC
- «LSR», LLC





Municipal infrastructure

Objects of municipal infrastructure:

Boiler rooms - 41ед. power is 272,2 Gcal/hour

Thermal networks (in two-pipe calculation) - 122,7 km

The Central Thermal Points (CTP) - 5 units.

Water intakes - 6 units.

Pump stations of a water supply system - 41 units.

Water supply systems - 170,9 km

Sewer pump stations - 21 units.

Treatment facilities of the sewerage - 5 units.

Sewer networks - 145,4 km

Electric networks - 762,7 km

Transformer substations - 306 units.





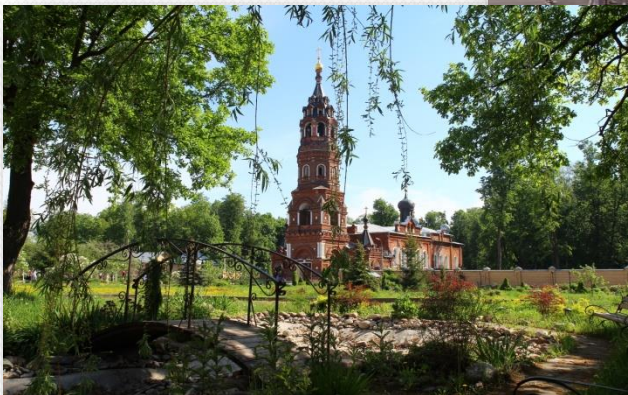
Tourism

The Pavlovo-Posadskiy municipal district include 14 operating temples, a man's monastery and a set of chapels, and also 59 objects - monuments of civil architecture.

Existence around a large number of monuments of cultural and spiritual heritage, orthodox shrines, monasteries, the museums, natural landscapes, environmentally friendly corners of the magnificent nature, – all this creates fine opportunities for development of the full-fledged industry of tourism.

In the city settlement the Bolshie Dvory the new museum exhibition complex “Knyazhy Dvor” is opened. The territory of a complex is devoted to an era of the Grand duke Moscow Daniil Aleksandrovich.

One of new projects in the tourism sector "The Pavlovskiy Posad - open-air museum". With an idea of - creation of the historical and ethnographic museum complex with a pedestrian zone and buildings constructions, traditional for the Russian merchant city.





Tourism holidays



Festival of forge skill



Festival «Pavlovskiy Posad shawl - symbol of Russia»



Festival of bells



Reconstruction of events of Patriotic war of 1812
(Vokhonsky battle).



Investment advantages

- Conducive climatic conditions
- Proximity of the Moscow megalopolis and regions with a high payment potential of the population
- Advantageous geographical position on crossing of the thoroughfares connecting Moscow and the East of Russia
- Common economic area with the capital
- Proximity of the international airports and developed road and transport network
- Existence of qualified personnel and opportunity for their preparation
- World fame (Pavlovskiy Posad shawl)
- Investor friendly local administration



Economic areas, priority for investment

- 1. Industrial production (ecologically pure manufacturing)**
- 2. Creation of the logistic centers (modern warehouse complexes)**
- 3. Construction of low-rise buildings**
- 4. Greenhouse farming, agricultural production**
- 5. Touristic industry**



Investment projects

1 - Recreation area
«Pavlovskiy Posad sea»



2 - The small aviation
airfield



3 - Shopping
Center
and Retail Park
«Bellavita»



4 - Logistic
park «Kuznetsy»



5 - Construction of
low-rise buildings
«Kuznetsy»



6 - Construction of low-
rise buildings
«Gavrinskaya Poyma»



7 - Construction of low-rise
buildings «Filimonovo»



8 - Construction of
high-rise buildings
«Uzhny»



9 – «Mishutino»
industrial zone



10- Housing complex
«Zvezdny-2»



11- Construction of the
recycling manufacture





1. Recreation area «Pavlovskiy Posad sea»



1. Location: on the north of the Pavlovo-Posadskiy municipal area

2. Site area: 59,3 Ha

3. Connection:

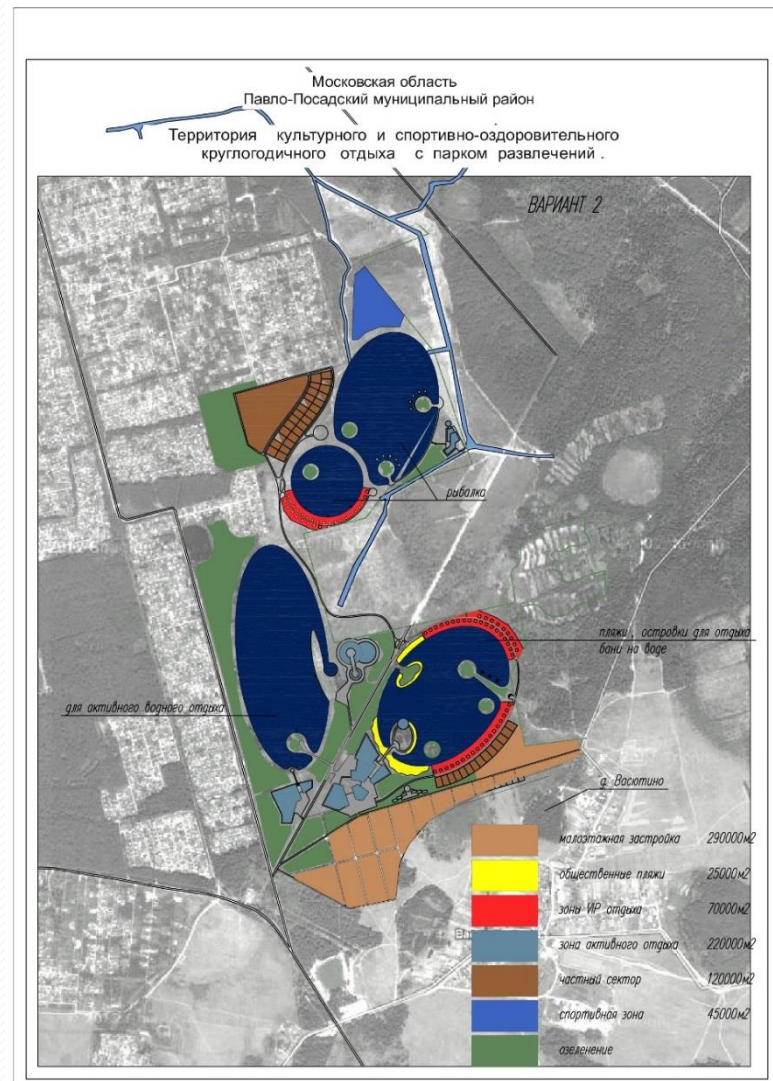
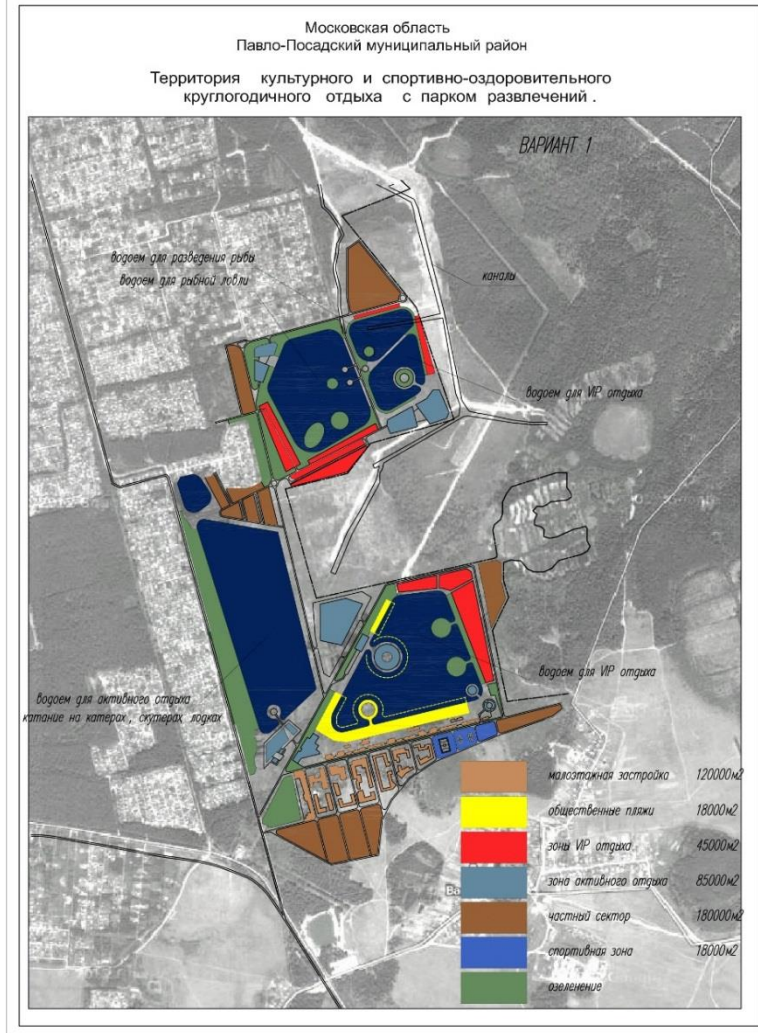
- gas supply;
- electricity;
- water supply;
- heating;
- sewage lines.

4. Granting conditions:

- leasing;
- purchase.

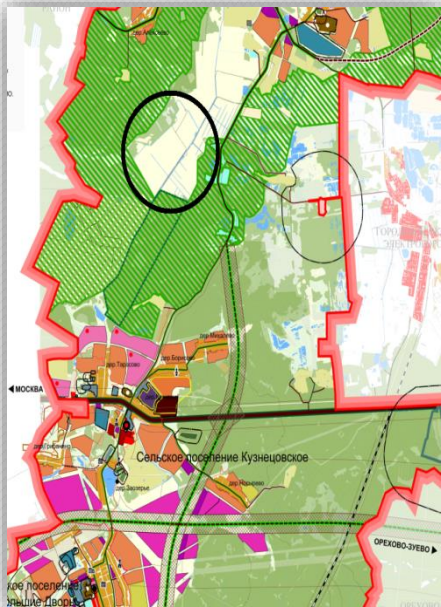


1. Recreation area «Pavlovskiy Posad sea»





2. The small aviation airfield



1. Location: on the north of the Pavlovo-Posadskiy municipal district

2. Site area: 100 Ha

3. Connection:

- gas supply;
- electricity;
- water supply;
- heating;
- sewage lines.

4. Granting conditions:

- leasing;
- purchase.





3. Shopping Center and Retail Park «Bellavita»



1. Location: on the north of the
Pavlovo-Posadskiy municipal district

2. Site area: 17 Ha

3. Connection:

- gas supply;
- electricity;
- water supply;
- heating;
- sewage lines.

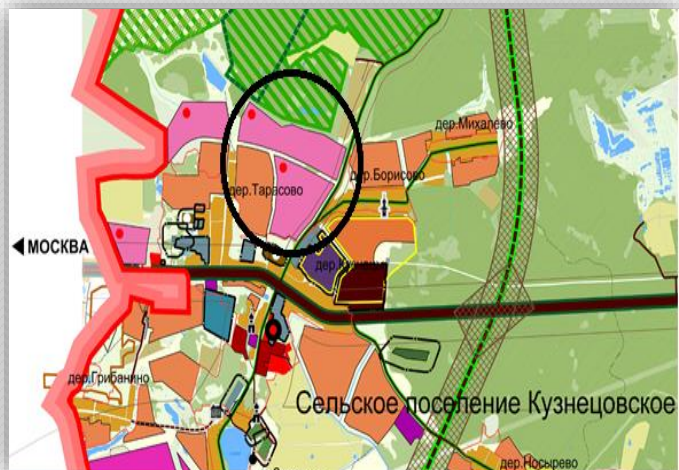
4. Granting conditions:

- leasing;
- purchase.





4. Logistic park «Kuznetsy»



1. Location: on the west side of the Pavlovo-Posadskiy municipal district

2. Site area: 68 Ha

3. Connection:

- gas supply;
- electricity;
- water supply;
- heating;
- sewage lines.

4. Granting conditions:

- leasing;
- purchase.





5. Construction of low-rise buildings «Kuznetsy»

1. Location: on the west of the
Pavlovo-Posadskiy municipal district

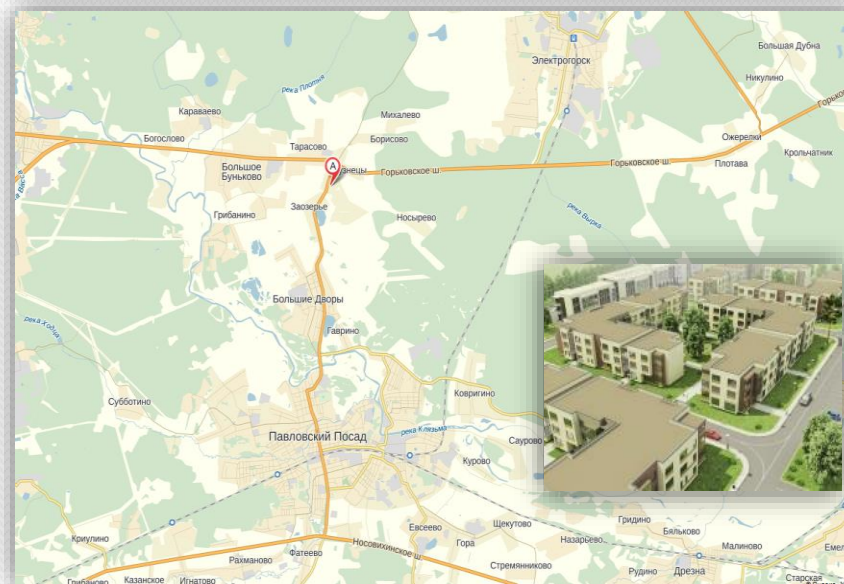
2. Site area: 5,9 Ha

3. Connection:

- gas supply;
- electricity;
- water supply;
- heating;
- sewage lines.

4. Granting conditions:

- leasing;
- purchase.





6. Construction of low-rise buildings «Gavrinskaya Poyma»

1. Location: the center of the
Pavlovo-Posadskiy municipal district

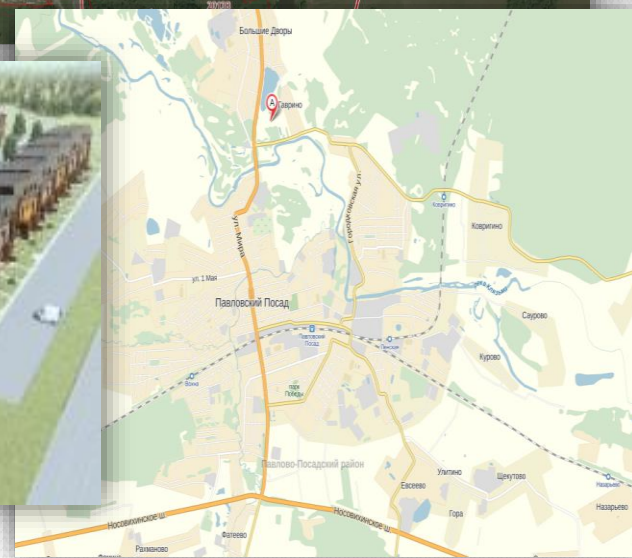
2. Site area: 34,2 Ha

3. Connection:

- gas supply;
- electricity;
- water supply;
- heating;
- sewage lines.

4. Granting conditions:

- leasing;
- purchase.





7. Construction of low-rise buildings «Filimonovo»

1. Location: the center of the Pavlovo-Posadskiy municipal district

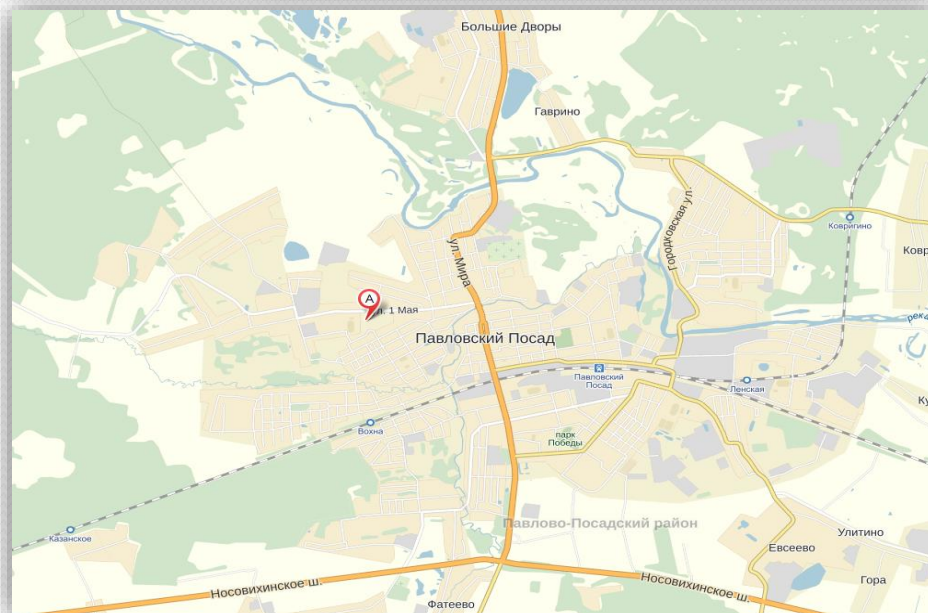
2. Site area: 3,9 Ha

3. Connection:

- gas supply;
- electricity;
- water supply;
- heating;
- sewage lines.

4. Granting conditions:

- leasing;
- purchase.





8. Construction of high-rise buildings «Uzhny»

1. Location: the center of the
Pavlovo-Posadskiy municipal district

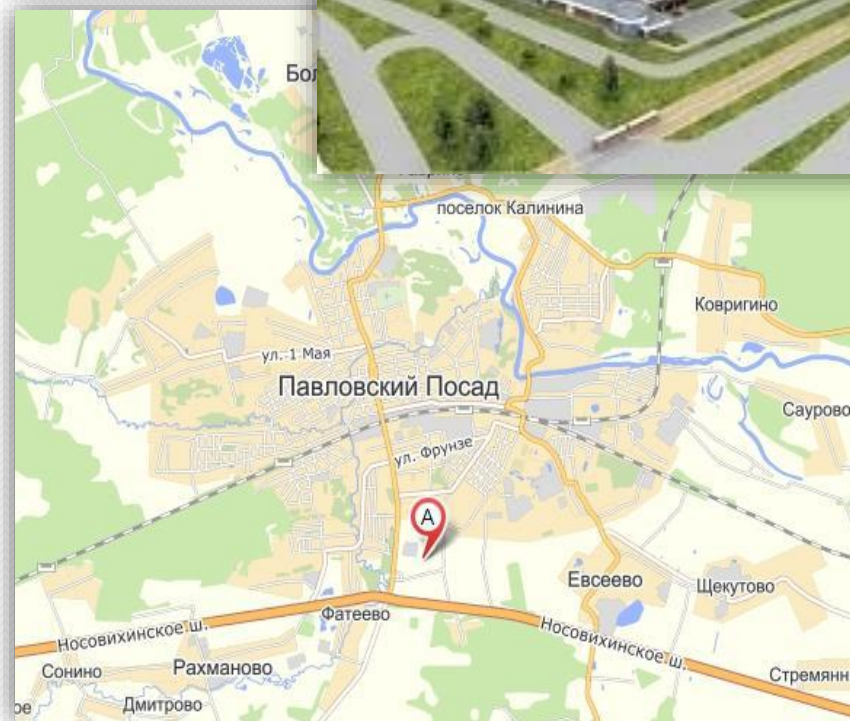
2. Site area: 52 Ha

3. Connection:

- gas supply;
- electricity;
- water supply;
- heating;
- sewage lines.

4. Granting conditions:

- leasing;
- purchase.





9. «Mishutino» industrial zone

1. Location: the center of the Pavlovo-Posadskiy municipal district

2. Site area: 3,70 Ha;
3,85 Ha;
4,27 Ha.

Land category - private property.

3. Connection:

- gas supply;
- electricity;
- water supply;
- heating;
- sewage lines.

4. Granting conditions:

- leasing;
- purchase.



ПАВЛОВО-ПОСАДСКИЙ
ГОФРОКОМБИНАТ



9. «Mishutino» industrial zone





10. Housing complex «Zvezdny-2»

1. Location: on the south side of the Pavlovo-Posadskiy municipal district

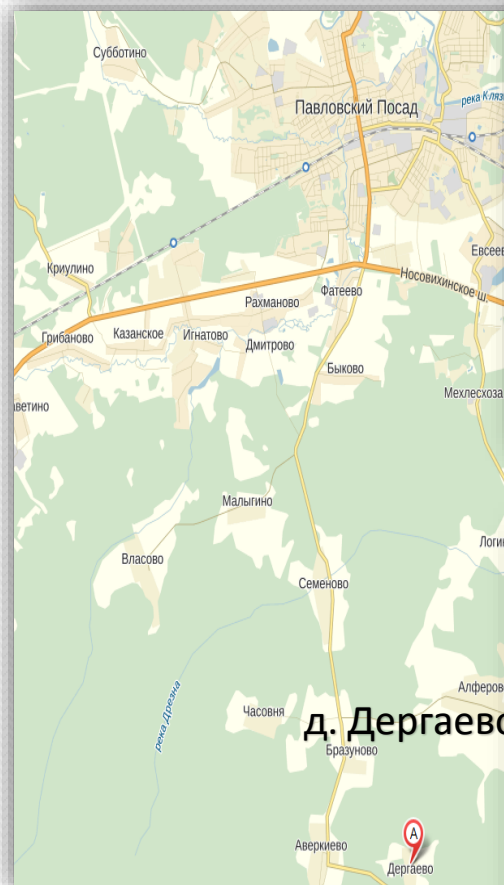
2. Site area: 56,5 Ha

3. Connection:

- gas supply;
- electricity;
- water supply;
- heating;
- sewage lines.

4. Granting conditions:

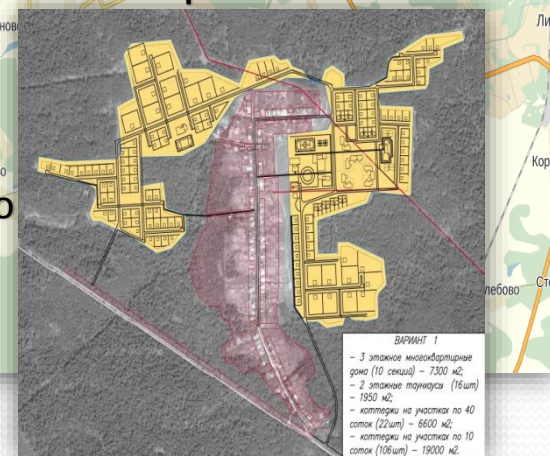
- leasing;
- purchase.



Вариант 1



Вариант 2





11. Construction recycling plant

1. Location: on the east side of the Pavlovo-Posadskiy municipal district

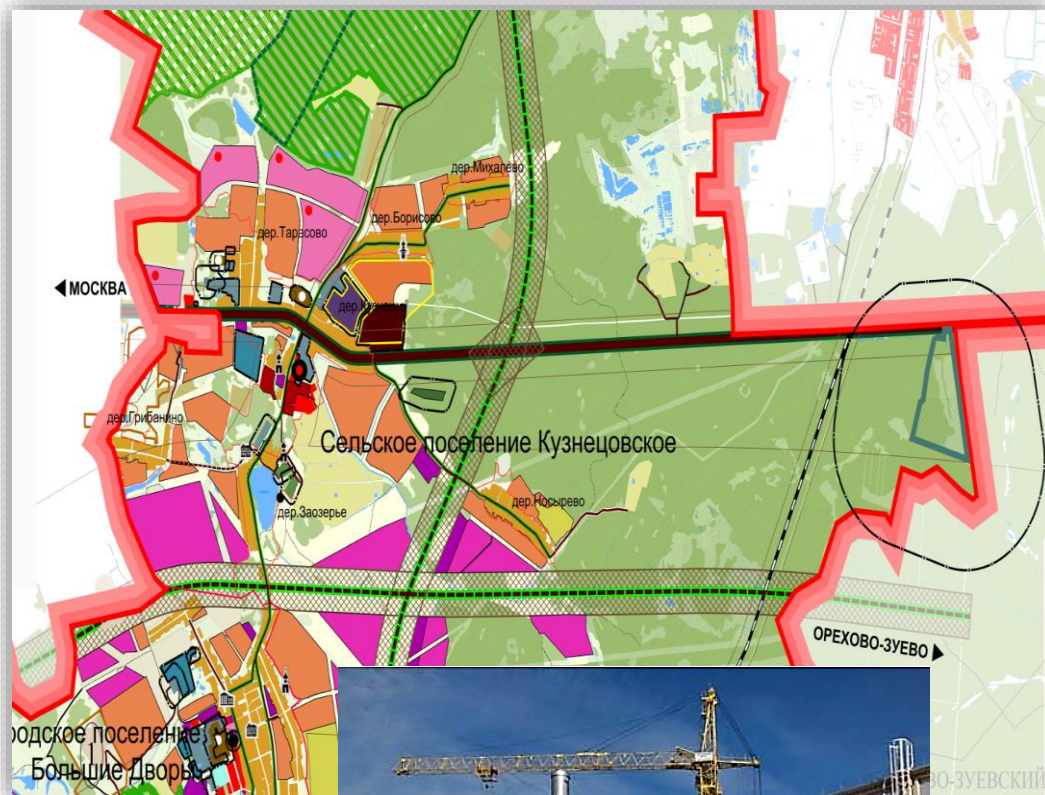
2. Site area: 100 Ha

3. Connection:

- gas supply;
- electricity;
- water supply;
- heating;
- sewage lines.

4. Granting conditions:

- leasing;
- purchase.





Contact information

Administration of the Pavlovo-Posadskiy municipal district of Moscow Region

142500, Moscow region, Pavlovskiy Posad, Revolution Square, 4,

Tel: 8(49643) 2-05-87,

Fax: 8 (49643) 2-24-09

pavpos@mosreg.ru, pavpos.ru

